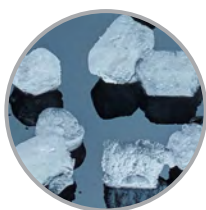




Sealed, maintenance-free bearings ensure maximum reliability and contribute to a long machine life



Available in softer, Original Chewable Nugget Ice or harder, H² Nugget Ice



Nugget Ice



Original Chewable Nugget
Ice Hardness Rating: Soft = 74%
Dimensions: 3/16" x 3/16" x 3/8"



H² Nugget
Ice Hardness Rating: Hard = 87%
Dimensions: 3/4" x 3/16" x 3/8"

N0922 - 900lb Nugget Ice Machine

Prodigy Plus® Nugget Ice Machine

Features & Benefits

- Available in softer, Original Chewable Nugget Ice and harder, H² Nugget Ice
- Sealed, maintenance-free bearings for reduced preventative maintenance and long-lasting performance
- Stainless steel evaporator and auger for maximum durability
- AutoAlert™ indicator lights for better visibility
- Operational footprint among the industry's smallest
- Unit specific QR code for quick access to service manuals, cleaning guides and warranty history
- Front-breathing - No side clearance required for flexible placement
- Smart-Board™ advanced feature module available for additional diagnostic capabilities
- Optional Vari-Smart™ ice level control allows operators to customize ice levels
- Antimicrobial protection guards internal surfaces between cleanings
- Sealed refrigeration system minimizes outside airborne contamination
- Inherently more energy and water efficient than cube machines



24 Hour Volume Production

Original Chewable Nugget

Air Cooled		Remote Cooled		Water Cooled	
70°F/21°C	Air	90°F/32°C	Air	70°F/21°C	Air
50°F/10°C	Water	70°F/21°C	Water	50°F/10°C	Water
956/438	lb/kg	707/321	lb/kg	1094/496	lb/kg



24 Hour Volume Production

H² Nugget

Air Cooled		Remote Cooled		Water Cooled	
70°F/21°C	Air	90°F/32°C	Air	70°F/21°C	Air
50°F/10°C	Water	70°F/21°C	Water	50°F/10°C	Water
862/392	lb/kg	695/316	lb/kg	908/412	lb/kg



Modular Bin & Dispenser Options

Model Number*	Dimensions W" x D" x H"	Bin Application		lb/kg Ship Weight
		Capacity lb/kg	Finish	
B530P	30 x 34 x 44**	536/244	Poly	110/50
B530S	30 x 34 x 44**	536/244	Metallic	150/68
B842S	42 x 34 x 44**	778/353	Metallic	190/86
B948S	48 x 34 x 44**	893/406	Metallic	209/95
IOD200	30 x 31 x 35	-	Stainless Steel	235/107
IOD250	30 x 31 x 35	-	Stainless Steel	260/152

*Contact Scotsman for bin top requirements. **Add 6" Height for bin legs. † Stainless steel with galvanized back & bottom.



Certification



Warranty

- 3 years parts and labor on all components.
- 5 years parts on the compressor.
- Warranty valid in North, South & Central America for commercial installations.
- Contact factory for warranty in other regions.
- Residential Applications: 1 year parts and labor

Scotsman®

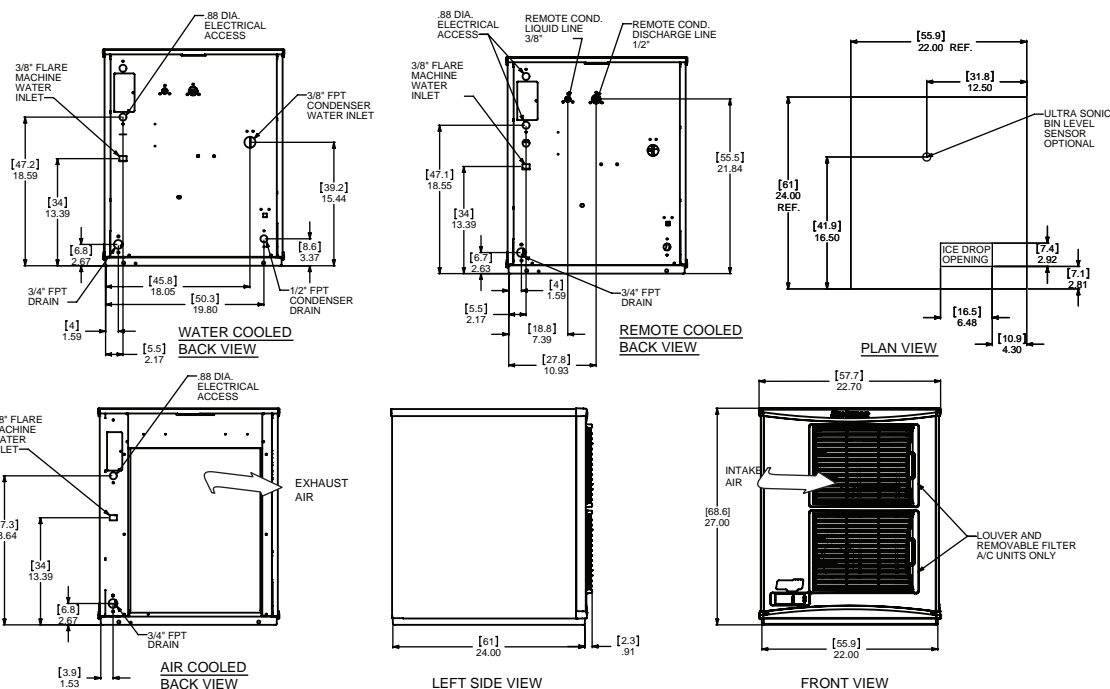
101 Corporate Woods Parkway, Vernon Hills, IL 60061

1-800-SCOTSMAN | Fax: 847-913-9844 | www.scotsman-ice.com | customer.relations@scotsman-ice.com

N0922 - 900lb Nugget Ice Machine

N0922 - 900lb Nugget Ice Machine

Prodigy Plus® Nugget Ice Machine



Specifications

Model Number	Condenser Unit	Basic Electrical Volts/Hz/Phase	Max. Fuse Size or HACR Circuit Breaker (amps)	Circuit Wires	Min. Circuit Ampacity	Energy Consumption kWh/100 lb (45.4 kg) 90°F(32°C)/70°F(21°C)	Water Usage Gallons/100 lb (liters/45.4 kg)		Energy Star®
							Potable 90°F(32°C)/70°F(21°C)	Condenser 90°F(32°C)/70°F(21°C)	
soft	NS0922AX-1	Air 115/60/1	20	2	16.7	3.82	12.0/45.5	-	✓
	NS0922AX-32	Air 208-230/60/1	15	2	10.6	3.82	12.0/45.5	-	
	NS0922R-1	Remote 115/60/1	20	2	17.4	3.82	12.0/45.5	-	
	NS0922R-32	Remote 208-230/60/1	15	2	11.7	3.82	12.0/45.5	-	
	NS0922WX-32	Water 208-230/60/1	15	2	9.5	3.09	12.0/45.5	125/473.2	
hard	NH0922AX-1	Air 115/60/1	20	2	16.7	3.87	12.0/45.5	-	
	NH0922AX-32	Air 208-230/60/1	15	2	10.6	3.87	12.0/45.5	-	
	NH0922R-1	Remote 115/60/1	20	2	17.4	4.24	12.0/45.5	-	
	NH0922R-32	Remote 208-230/60/1	15	2	11.7	4.24	12.0/45.5	-	
	NS0922WX-32	Water 208-230/60/1	15	2	9.5	3.14	12.0/45.5	136/515	



All Models

Dimensions (W x D x H):

Unit:	Individual 22.9" x 24" x 27" (58.2 x 61.0 x 68.6 cm)
	Side by Side 45.8" x 24" x 27" (116.3 x 61.0 x 68.6 cm)
Shipping Carton:	25.5" x 27.5" x 32.5" (64.8 x 69.9 x 82.6 cm)

Shipping Weight: 210 lb / 95 kg BTUs per hour: 10,500

Model Number	Refrigerant	Refrigerant Charge (oz)
NS0922AX-1	R290	7.0
NS0922AX-32	R290	7.0
NS0922R-1	R-404A	192.0
NS0922R-32	R-404A	192.0
NS0922WX-32	R290	6.0
NH0922AX-1	R290	7.0
NH0922AX-32	R290	7.0
NH0922R-1	R-404A	192.0
NH0922R-32	R-404A	192.0
NS0922WX-32	R290	6.0



Accessories

Model Number	Description
KVS	Vari-Smart™ Ice Level Control - Program ice bin levels to match ice needs.
KSBU	Smart-Board™ Advanced Control - Use additional operational data for fast diagnosis.
KSBU-N	Smart-Board™ Advanced Control with Network - Network capable.
KPAS	Prodigy Advanced Sustainability Kit - Includes KVS and KSBU - N
ERC311-32	Remote condenser for N0922R, 208-230V/60/1
ERC111-1	Remote condenser for N0922R-1, 115V/60/1
BRTE10	Line set, 10ft, brazing required.
BRTE25	Line set, 25ft, brazing required.
BRTE40	Line set, 40ft, brazing required.
BRTE75	Line set, 75ft, brazing required.

Scotsman recommends all ice machines have water filtration. See Scotsman water filter specification sheet for details.



Operating Requirements

	Minimum	Maximum
Air Temperatures	50°F (10°C)	100°F (38°C)
Water Temperatures	40°F (4.4°C)	100°F (38°C)
Remote Cond. Temps	-20°F (-29°C)	120°F (49°C)
Water Pressures	20 PSIG (1.4 bar)	80 PSIG (5.5 bar)
Electrical Voltage	-5%	+10%

Specifications and design are subject to change without notice.